



# Prospectus

2025/2026

**INVICTUS**

Education Trust

# Welcome to our School



The motto of 'Aspire and Achieve' underpins all aspects of life at Leasowes; we are an ambitious and hard-working school committed to excellence. To 'Aspire' is to direct our students' hopes and ambitions towards achieving their highest academic results and fulfilment of potential. To 'Achieve' is to successfully bring about the end results of that aspiration through their hard work, effort, skill and courage. As a community we work together to our ultimate shared desire; to be an outstanding school within a Multi Academy Trust that is oversubscribed in the local community.

Our aim is to help each and every student to understand and reach their potential by offering an impressive range of opportunities and approaches to learning, supported by a caring and committed pastoral team, dedicated to the health, emotional wellbeing and personal development of each and every individual.

We are a school committed to providing a rigorous academic curriculum where students gain knowledge, skills and understanding through outstanding teaching. Our curriculum provides breadth across all subjects, including the arts, technology, and languages. Reading underpins the curriculum where everyone will follow a whole school strategy to aid students with comprehension and literacy skills across all subjects. This is done through our Guided Reading strategy. Leasowes' curriculum supports the needs of all; students from year 7 are taught in a mix of form groups and ability based groups, with emphasis on progress and achievement, but no child is overlooked or undervalued in our desire to Aspire and Achieve.

At Leasowes each student is challenged to bring more to their education than a lesson by lesson experience. The range of activities offered to students is varied, with extra curricular clubs available for all. The school has daily sporting activities, as well as opportunities to represent the school in the traditional teams. Every year the Arts team work with our students in the school production and they have the opportunity to take a lead part in the show, or be a member of the chorus. Many of our students also work on the lighting, sound and are the back stage crew. It is a complete team effort, and again, shows the importance and value that the school places in its work outside of the classroom as well as within it. Whatever the need or interest of the student, we believe that there will be something to challenge, inspire or motivate them at Leasowes.

The school is a happy and caring environment which celebrates achievement and nurtures. Our pastoral team includes form tutors for each child, a Head of Year for each year group, pastoral support managers who work daily with all children, an attendance officer, and a nurse. The work that is undertaken by them encompasses safeguarding the children in our care, and supports them throughout their time with us, providing them with the skills and knowledge to be resilient and thrive in the future. This is further enhanced with the School Health Team being based in the school and supports the education of our Personal, Social, Health and Citizenship programme, as well as meeting individual needs of children and families. This is again supported by an active support network of parents led by one of our Senior Leadership Team.

Since 2022 the school have worked closely with Ethos, part of the Grace Foundation, which is a Christian charity. They now reside on school site and provide further pastoral support to our students and families throughout the year in a large variety of activities and workshops. We have an Ethos Leader, Youth Worker and a Family Support Worker, who all work tirelessly to help our community.

In December 2016, the school became an Academy and joined the Invictus Education Trust. With the collaboration of seven schools, the mission is to raise standards and this is already evidenced by increased numbers of children wishing to attend an Invictus school. Our own school has now been oversubscribed in year 7 for eight consecutive years, with the September 2024 starters being over 90% applied as first choice.

The joint 6th form, Invictus 6th allows for a base in each school so that students, although not necessarily taught directly at the school, are still guaranteed the support provided, as well as the challenge of being taught by the best teachers across the trust, including our own moving across sites. There has been collaboration around sports, which includes termly 'Invictus Games', schools competing against each other, visits to high profile events including Wimbledon, and events planned every term in a variety of traditional and prestigious sports. As the trust develops over the next few years, all students at Leasowes will have the opportunity to participate in elite experiences.

In conclusion, Leasowes High School is a 'good' school (Ofsted September 2019). It is one that believes in providing an outstanding education for all its students, with a first class curriculum offer; an enhanced extra curricular programme, individual personal development, incorporating traditional values, which will allow all children to thrive in the future.

## Leasowes High School GCSE Results

Leasowes High School celebrates another year of excellent exam results. Our students have shown remarkable determination and resilience, and I am incredibly proud of their successes. These results are a testament to their hard work, the support of their families, and the dedication of our staff. At Leasowes High School we are committed to providing an environment where every student can excel, and these results show the strength of our community.

Notable achievements: Grace: 6x 9s and 3x 8s, Freya: 2x 9s, 5x 8s and 2x 7s, Jacob: 5x 9s, 2x 8s, 1x 7, 1x 6 and 1x 5, Harry: 3x 9s, 3x 8s, 1x 7, 1x 6 and 1x 5

The following students achieved the best progress in school scoring over a grade higher in every single subject: Ben, Erin and Rose.

Special mention against adversity would be: Brianna and Liana, and Charlotte and Phoebe from Revive

The school continues to strive for better outcomes and this year 72% of students achieved a grade 4 or above in English and 61% a grade 5+. In mathematics, 65% achieved a grade 4 and 42% a grade 5+. GCSE Art & Design, GCSE Religious Studies, GCSE DT, GCSE Drama, GCSE PE, GCSE Biology and GCSE Food Tech have made exceptional academic progress.

We are proud of all that our Year 11s have achieved and wish them well in their future studies.

Headteacher, Christiana Papadopoulos

# Joining our School

## INVICTUS

Education Trust

### Transition

The care for your child begins long before they come to Leasowes. Our staff will visit Primary schools and work closely with colleagues to learn about the children coming to us, and what they have been learning. We encourage children from a wide range of primary schools to visit us in years 4, 5 and 6 so that transition to school can be made with confidence. These include the Arts Fest for Year 5 students and primary sports tournaments including football, netball and indoor sports.

Induction days take place in the summer term when children will spend time with us to familiarise themselves with the new school. Children are supported by student leadership team who can respond to all questions and help with the inevitable nerves of a new school.

Some children may be given an earlier induction morning if there is only a small number coming from their primary school to allow some new friendships to be made before the two-day induction programme. At our special evening for parents and carers, there is time for the final exchange of information which should ensure that starting Leasowes High School is a smooth and well-organised process. Leasowes also hosts summer school at the start of the holidays for our new Year 7s. This is a great time for students to make new friends and work together as a team.

### High Expectations and Reward

We recognise and reward hard work, positive attitudes, good attendance, behaviour and achievements, both in and out of school. This is done through an online system of positive and

negative points. The points are then celebrated with award assemblies, letters of recognition, achievement postcards and reward badges as well as termly events. Students who demonstrate excellence in these areas are invited to be part of the Reward Trip.

### Admissions

Leasowes adopts the policy of the Dudley Local Authority in relation to admissions. Questions regarding admissions to Leasowes can be found on the website or addressed to:

School Admissions Service  
The Council House, Priory Road, Dudley,  
West Midlands DY1 1HF

During the school's open weeks prospective parents are given tours of the school.



*“The school cares about me and wants me to be the best I can be.”*

# Leasowes Curriculum



At Leasowes High School, we are committed to providing a rigorous academic curriculum where students gain knowledge, skills and understanding through quality first teaching. We are confident that our curriculum at Leasowes is broad, balanced and fully inclusive; meeting the learning needs of each and every young person in order for them to reach their full potential. It operates with a three year Key Stage 3 and a two year Key Stage 4 programme with students studying GCSE and Level 2 qualifications such as BTEC or Cambridge Nationals. There is an impressive range of opportunities for our young people both within the classroom and the wider school setting with extra-curricular activities and school visits as part of the curriculum experience. Students are supported by a caring and committed pastoral team and there is a strong focus on the health, emotional wellbeing and personal development of each and every individual in our care.

When students join us in Year 7, they are taught in their form groups. During the first term at Leasowes students are assessed through various baselines and monitoring of progress in order to ensure the correct ability based group. All students study the following subjects in Key Stage Three; Art, Computing, Design Technology, English, Geography, History, Mathematics, Modern Foreign Languages, Music, Performing Arts, Physical Education, PSHCE, Religious Studies and Science.

On entry in Year 7, Key Stage 2 data is provided to the school which informs us what ability each child is working at and assists

with the setting of aspirational targets. These targets are based on the progress a child is expected to make during the five years. The school conducts reading tests to indicate what support students may need and to assist the classroom teachers to inform their planning and delivery of lessons. Those students with additional learning needs are supported both in lessons with learning support assistants as well as appropriate interventions that are run in our Personalised Learning Centre. This is led by our expert SENDCO. Information about Special Educational Needs and Disability can be found on our school website. Our policies cover arrangements for admission of students with disabilities; details of steps taken to prevent disabled students being treated less favourable than other students; details of existing facilities to assist access to the school by students with disabilities as well as our accessibility plan.

A core strength of our school is our Guided Reading programme; supporting and helping students to improve their reading and literacy skills. This programme runs within tutor time across four mornings a week. There is additional reading and phonics intervention for those students with a low reading and literacy level.

Our Physical, Social, Health and Citizenship Education programme (PSHCE) covers an extensive and comprehensive delivery plan. This is facilitated by the form tutor who has developed strong relationships with the students. It addresses key health related education including issues around mental health and wellbeing as well as substance abuse. It also looks at keeping young people safe online and other aspects of safeguarding such as healthy relationships and sex education. Before the sex education course begins, parents/carers can exercise the right to withdraw their child at this time. Further information on this can be found on our school website.

We deliver Religious Education across both Key Stage Three and Four. This is taught by specialists within the Humanities department and focuses on beliefs and values both morally and spiritually. Religious Studies is a GCSE on

offer as part of the option process and studied at Key Stage Four.

We aim to provide careers, skills and training advice and guidance for all of our learners. There is a career's focus across our curriculum delivery with teachers signposting topics and how they link to the world of work. Our programme follows the Gatsby Career Benchmarks which are the result of an international study to find the best practice in career guidance worldwide. Every year group follow a programme specific to them in their learning journey and the aim is to raise aspirations and provide students with a better understanding of the pathways needed to take in order to achieve their goals. Students have the opportunity to visit universities; attend Aim higher workshops and in Year 10 go out on work experience placements.

## Aspire and Achieve

Leasowes High School's motto is to 'Aspire and Achieve'. This underpins all aspects of school life for both students and all Leasowes staff. To aspire is to have a great ambition or ultimate goal to strive towards and be resilient and determined in the process in achieving this.

## Aspire

We aspire for students to regard their learning journey at Leasowes as the next step towards their personal achievement. We aim to provide the opportunities to make this happen and to



*“The opportunities given are possible because of the amazing staff who put so much time into helping the students reach their full potential.”*



provide the necessary support both academically and with pastoral assistance. We aim to challenge every young person in school and pride ourselves on the partnership with parents or carers and the wider community to support them in fulfilling their aspirations.

## Achieve

To achieve is to work hard and persevere to bring about success. This encompasses what Leasowes staff believe will be the pinnacle of students' aspirations. Our students are rewarded for their achievements in school with departmental praise postcards or certificates; positive phone calls home; prizes for sustained effort and good work. We also recognise excellent attendance and punctuality as well as promoting being a good citizen around school displaying qualities such as kindness and respect to others.

## Reading at Leasowes

At Leasowes we place very high importance on reading; students who struggle to read will struggle to access all areas of the curriculum and will be disadvantaged both in their examination subjects but also in life after Leasowes. All of our teaching staff receive regular training on reading, comprehension and vocabulary acquisition so that reading is taught across the curriculum, with a focus on widening students' vocabulary. All students in years 7-10 take part in Guided Reading four times a week during tutor time. All students in years 7-9 use the Bedrock reading programme for their English homework. Regular reading tests identify students who are below their chronological reading age and a number of interventions are used to close the gap. Our new bespoke library has been designed with a focus on

reading for pleasure, with all the latest titles as well as the classics. Author visits and reading competitions, as well as a huge celebration of reading during World Book day across the school demonstrates the importance we place on reading.

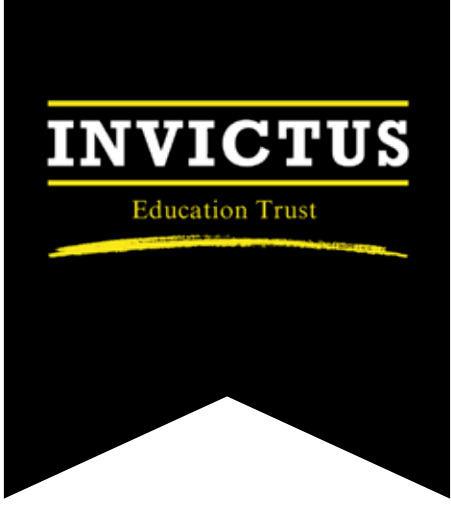
Our school assemblies regularly share and celebrate academic achievement; sporting success; artistic talent and positive attitude towards learning. Our year 11 students and their parents are invited to a dedicated awards evening at the end of their time at Leasowes where we formally recognise their achievement academically as well as being positive role models and respected members of our school community.

## Leasowes School Aims

Every day we strive to ensure our students are successful.

- To enable all young people in our school to learn by removing all barriers
- To prepare them for a life in which the world is constantly changing
- To instil in them the desire for lifelong learning
- To equip all of our young people with the skills to meet objectives and undertake tasks successfully
- To encourage effective communication and social skills; tolerance for and celebration of differences; showing care and respect for others
- To enable everyone to build and maintain positive, healthy relationships





*Invictus Education Trust was created in March 2015 by a group of like-minded schools: Crestwood, Ellowes Hall Sports College, Kinver High and Wombourne High School. Two schools have since joined us, Leasowes High School in Autumn 2016 and Pedmore High School in September 2018. Rufford Primary School became the first primary school to join us in September 2021 further strengthening an already thriving Trust.*

Invictus Education Trust is proud to be a leading educational institution that is dedicated to providing our pupils with an exceptional education, unique opportunities and elite experiences. With a focus on academic excellence, holistic development and a passion for unlocking our students' limitless potential, we stand at the forefront of educational innovation.

Through our commitment to personalised learning, a wide array of enriching experiences, and a collaborative Sixth Form, Invictus Education Trust offers a transformative educational journey that puts our pupils at the heart of everything we do. The list is endless.

Academically, our teachers are supported by a team of subject directors who have proved

themselves to be at the forefront of their professions with a history of improving student outcomes. Our Headteachers, and their teams, focus relentlessly on teaching and learning, ensuring students are challenged to achieve their very best. Our pastoral teams work hard to ensure young people are cared for, focusing on their emotional and physical welfare, allowing them to integrate fully in school life.

We believe that everyone involved in our schools should be well supported in an inclusive, supportive environment. Personal development is a strength in all our schools. We do our utmost to prepare our young people for life outside and beyond school. There are many different leadership opportunities across our schools. These

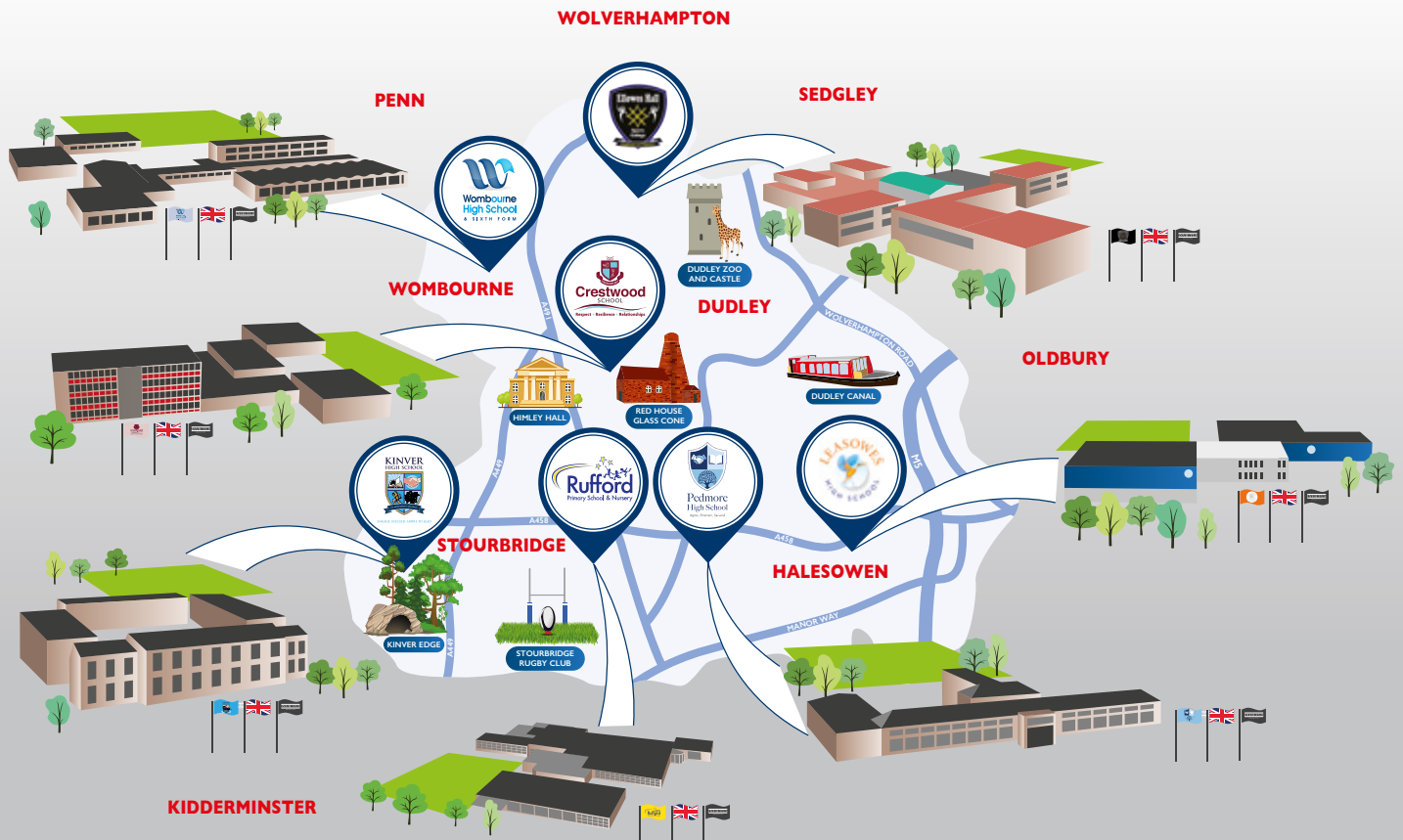
include Head Students, prefects, subject ambassadors and librarians. The range of enrichment activities across the Trust is varied.

**ENCOURAGING**

We offer extra curricular opportunities which reflect pupils' interests whilst encouraging them to try activities that they may not have experienced or even thought they could do at school. Examples of these are Mountain Biking, completing High Rope courses, joining a choir, performing in a show or learning Chinese! We enter national competitions like Young Enterprise and Formula 1 in Schools Challenge, and do very well in them!

# WE ARE

# OUR SCHOOLS



Our Invictus values always place our students at the heart of everything we do

## Every great story begins here!

Outstanding inclusion, care and well-being where all can thrive and flourish

### MISSION

'Excellence everyday, unlimited ambition and transforming lives'

Excellent teaching and learning where we have knowledge-rich staff within their area of expertise

### VISION

'To create a community of inclusive schools where people choose to learn with us, work with us and belong with us, so that everyone succeeds.'

Ambitious careers and enrichment provision give meaning and purpose to education

### VALUES

Respect  
Resilience  
Relationships

Our schools sit at the heart of our communities

# Student Support

While we want to make certain that all students are academically achieving at their highest level of ability, we believe it's important that students wellbeing is taken care of and that students have the skills and strategies to live a wonderful flourishing life to take them through into adulthood.

We believe that the pastoral care we are able to offer students is exceptional. All students belong to a form group and in most cases stay with their form tutor throughout their time at Leasowes. Form Tutors are the most important point of contact as they see each student daily, keeping a caring eye on academic progress and their general wellbeing. They will monitor attendance, uniform expectations and behaviour of students, building in time to teach self-discipline, tolerance and social awareness. All year groups are overseen by a Head of Year and a Pastoral Manager that stay with the year group as they progress further through each Key stage. Heads of Year offer support with monitoring of academic progress as well as maintaining our high expectations in uniform, behaviour, attendance and punctuality. They lead on assemblies for their Year group which are often closely linked to our PHSCE Curriculum. Pastoral Managers are non-teaching staff and add value to the work of form tutors and

Heads of Year. They work closely with students who may need a key worker, providing 1:2:1 support and group work to promote self-esteem and resilience, leading to building relationships with students and families. Staff within the team are Assistant Designated Safeguarding Leads and Mental health trained, ensuring that students gain timely support where appropriate.

The Attendance Officer is part of our wider team in school, ensuring registers are checked daily and absences recorded, but is also there to challenge where attendance may be poor and work closely with families to improve, because poor attendance does impact on progress and attainment. The Attendance Officer will also refer families to the Education Support Service (statutory body for Dudley) if poor attendance to school continues or if holidays/leave of absence are taken in the school term (unless there are exceptional circumstances).

Starting secondary school is a huge milestone and occasionally, some students may need a little more support during the transition from Primary. Our Inclusion Centre provides a nurturing, safe environment which can help students to develop the skills required for secondary school. It's not unusual for some students, to struggle with settling or develop friendships or even with attendance. However, with support and guidance from our Inclusion Manager and Pastoral team, we will

endeavour to make sure that school becomes a better place. We do this through individualised placements and support plans for each student, working alongside parents and other agencies if appropriate. Students with special educational needs will be supported by our Additional Needs Team which consists of SENCO, one teacher and 8 teaching assistants. These work with students, parents and carers, and external services to ensure that students access education and achieve their potential. The student support from Inclusion, Pastoral and SEN team are there to ensure that every child thrives.

In addition to school-based interventions, we also have access to Reflexions EMHPs (Early Mental Health Practitioners) who work alongside CAMHS and provide Mental Health support to individual students or group work, providing students with strategies dealing with exam stress and other teenage worries. We have recently secured time from Local Community Police Service team who work with students, with consent from parents/carers, to promote positive and responsible behaviour in school and the wider community.

The School Nurse Team attend Leasowes on a weekly basis and support students and parents with health-based issues and other queries relating to emotional and sexual health when appropriate.





# Student Leadership

## INVICTUS

Education Trust



The school takes pride in ensuring that students have many opportunities to become leaders. There are a variety of leadership roles, such as eco council, well-being council, year group council and diversity council amongst others. Within these forums students are able to share ideas and concerns with teachers and senior leaders, so improvements can be made across the school for all. These groups meet regularly throughout the year.

We also encourage our students to take part in curriculum areas as subject ambassadors, this allows students, who have a particular passion for a subject

to meet with teachers and become involved in supporting, planning and organising events. They run lunchtime clubs and also represent the departments at open evenings and other events in school. Students involved in any of these groups are celebrated and are recognisable by the badges they are given to wear on their blazers. We hope that those students involved in our leadership opportunities will eventually become prefects or one of our head students in year 11. These student leaders, who can be differentiated by their stripey blazers and are seen to be the epitome of what we want all our Leasowes students to be. They undertake a variety of duties in school, represent Leasowes at a multitude of events and look after guests in school.

All of our prefects and head students are trained to be peer mentors, in turn supporting our vulnerable students, those who may be struggling with worries both in and out of school and support new year 7s when they start school as well as being attached to a form group to support transition. They apply to become a prefect during year 10 and undergo a stringent interview process where all aspects of their school career are taken into account, we look specifically at their behaviour, attendance, punctuality along with their commitment to school life, extracurricular activities and the wider community. It is a highly sort after, prestigious role, which showcases our students at their very best.

*“It is my privilege to be the Head Boy of Leasowes High School and to be a role model to the other students in the school, helping them reach their aspirations”*

# Unique Opportunities & *Elite Experiences*

## Enrichment

Leasowes offers a wide range of enrichment activities. There is an expectation that all students participate in this, as it provides a commitment to the school where achievement and success become closely associated with enjoyment. There are regular trips and experiences to different countries, including trips to the World War battlefields, Paris and Barcelona.

STEM (Science, Technology, Engineering and Mathematics) is a strength within the school. Students are able to work collaboratively across all year groups, applying the knowledge and skills acquired in the STEM subjects. Experiences are particularly focused upon the RAF Championships and Formula 1 in Schools events. The school has been successful in the Formula 1 competitions, having been judged as regional champions on numerous occasions and competing at national levels. We have won the Royal Aeronautical Society Stem Challenge and the RAF STEM Glider Championship a number of times.

Our school; a part of the Invictus Education Trust helps students to find and explore their talents and interests, through a wide, rich set of experiences which develop teamwork, resilience and citizenship.

Within the Physical Education department, students are taught an array of different sports and activities, as well as gaining an understanding of how to keep physically healthy and maintain an active lifestyle. There are a variety of teams that successfully participate in fixtures across Dudley, Worcestershire and Staffordshire. The Invictus Schools also participate in termly 'Invictus Games', and accomplished participation enables students to compete at a national level. Elite experiences include the Mountain

Bike Project, Sailing, Clay Pigeon Shooting, Rugby, Netball and Football Academies. We have an active and thriving Duke of Edinburgh programme, which allows students to complete their Bronze and Silver Awards.

Throughout the year, there are a range of school productions and showcases that many students are involved in. The most recent show was the 'Addams Family' and previous performances include; 'Beauty and the Beast', 'Peter Pan', 'Little Shop of Horrors' and 'We Will Rock You'. Enrichment opportunities focus on trips to the Harry Potter Warner Brothers Studios, London West End Theatre shows and museums, Dunfield House, master classes with artisans, Shakespeare in Schools, Performances at Birmingham Symphony Hall and the Pineapple Dance Studios. Wider experiences within the Invictus Education Trust include the Big Strings Project, Invictus Choir, the Performing Arts Academy and Invictus Rock Bands. These activities enable students to translate the Invictus values into everyday experiences and elite opportunities.

We are especially proud of our enrichment week which allows students to challenge themselves with new experiences, work alongside their peers and develop vital skills to enable them to achieve their potential and general knowledge. Examples consist of visits to the coast, local attractions, outdoor activity centres, virtual reality and drone flying.

We are confident that our broad offer of enrichment opportunities ensures that there is something for everyone, comprising of clubs such as cooking, film production, board games, bike maintenance, pottery and retro games.

In our pursuit of excellence and providing a well-rounded educational experience, we feel that our offer engages students and inspires them to achieve their best in all that they do.

## Careers at Leasowes

Careers education at Leasowes focuses on the skills, personal attributes and attitude that individuals need to be successful in life, as well as researching future career pathways.

The careers programme is mapped to both The Gatsby benchmarks and the CDI framework. Careers underpins subject teaching, where lessons are contextualised and students are given the opportunity to work individually and collaboratively, reflecting on their performance and setting targets for improvement. Careers is also delivered through the PSHCE programme, tutor time and bespoke careers assemblies. Throughout their time at Leasowes students will learn about the labour market, attend careers fairs in and out of school and visit higher and further education providers. All students take part in at least two employer engagement activities or workshops each year such as 'What's My line?' which is very popular with year 7. All year 10 students are encouraged to complete a week's work experience and all year 11 students have a careers guidance meeting with our school careers advisor. Leasowes likes to work closely with parents and encourage them to share their expertise, skills and work placement opportunities with our students. We aim to inspire all of our students to be the very best that they can be; to be ambitious, focused and fulfilled.





LEASOW  
H

